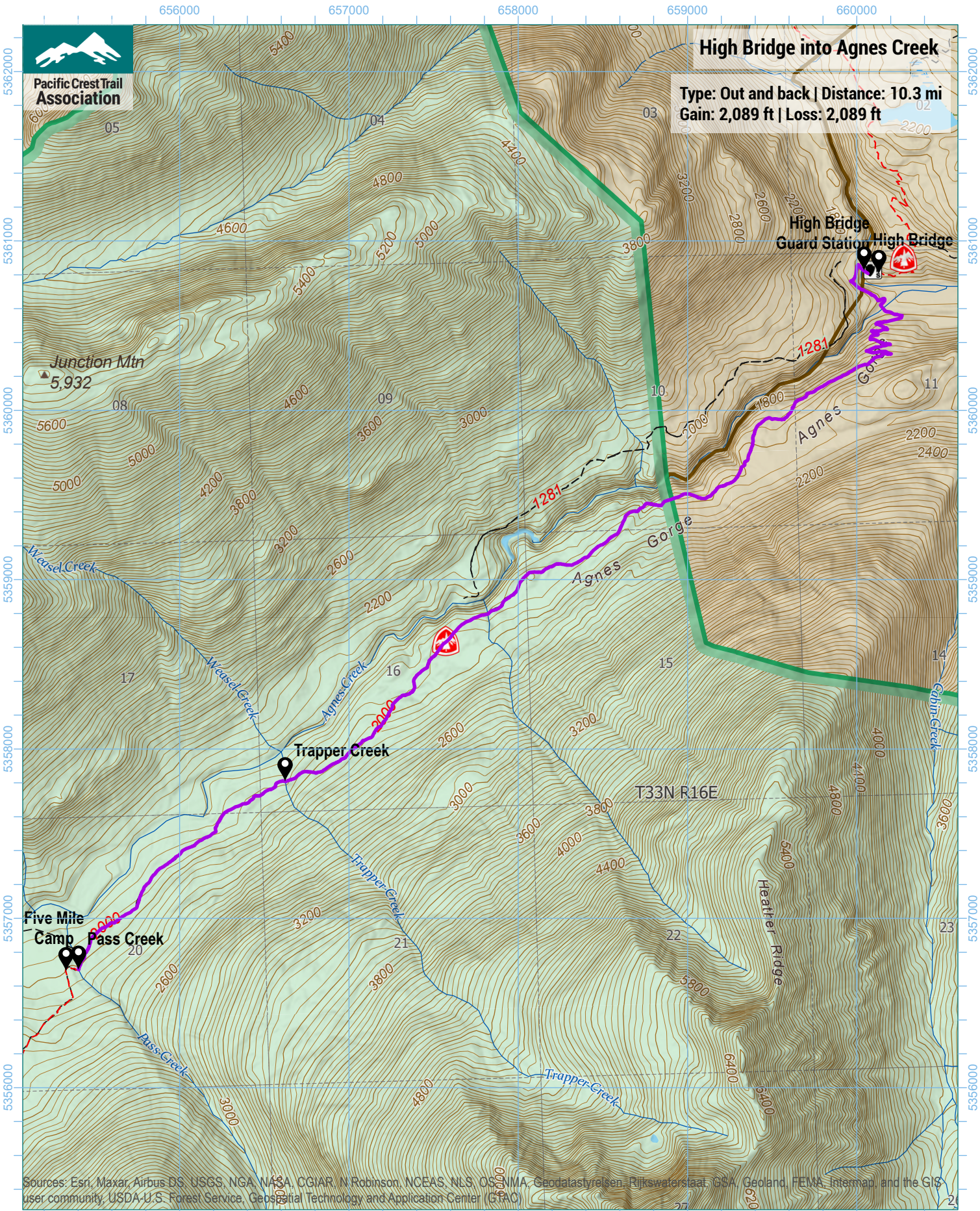




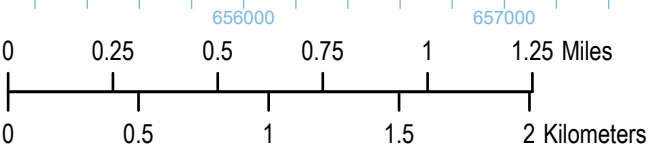
Pacific Crest Trail Association

### High Bridge into Agnes Creek

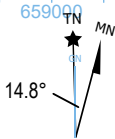
Type: Out and back | Distance: 10.3 mi  
Gain: 2,089 ft | Loss: 2,089 ft



Sources: Esri, Maxar, Airbus DS, USGS, NGA, NASA, CGIAR, N Robinson, NCEAS, NLS, OSM, NMA, Geodatastyrelsen, Rijkswaterstaat, USA, Geoland, FEMA, Intermap, and the GIS user community, USDA U.S. Forest Service, Geospatial Technology and Application Center (GTAC)



1 inch equals 2,417 feet  
1:29,000  
WGS 1984 UTM Zone 10N



Trip data by PCTA  
Basemap by US Forest Service  
Contour interval: 40ft